

# Power Inductor CDRH50D18R/LD



 **sumida**



## ■ Features

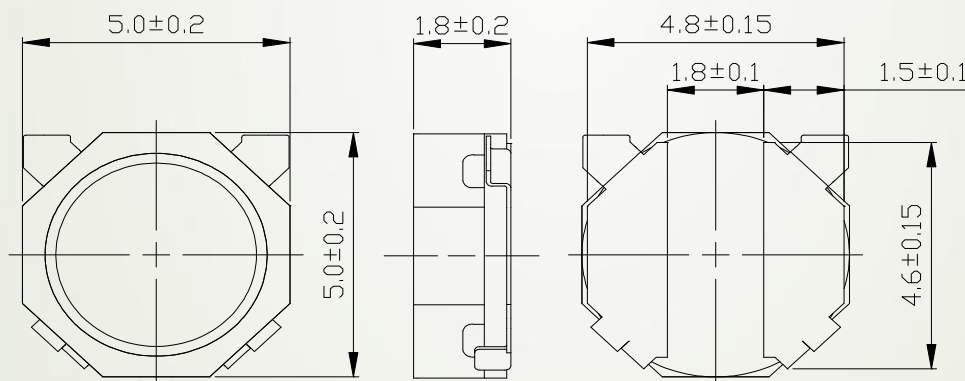
- ◎ Magnetically shielded construction.
- ◎ Storage temperature range:  $-40^{\circ}\text{C}\sim+105^{\circ}\text{C}$ .
- ◎ Operating temperature range:  $-40^{\circ}\text{C}\sim+105^{\circ}\text{C}$   
(including coil's self temperature rise).
- ◎ RoHS Compliance and Halogen Free.

## ■ Applications

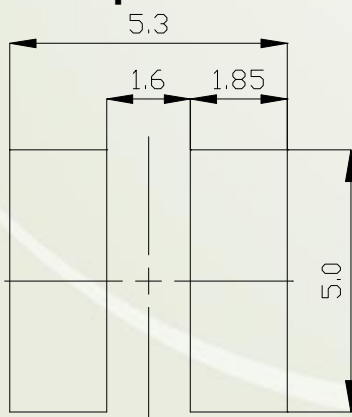
Ideally used in DVC, Camcorder, Single-lens reflex camera etc.

## ■ Dimensions/Recommended Land Patterns (mm)

### ◆ Dimensions



### ◆ Land pattern



# Power Inductor CDRH50D18R/LD



## ■ Electrical Characteristics specification.

No.	Part name	Stamp	Inductance ( $\mu$ H) 〔Within〕 ※1	D.C.R. (m $\Omega$ ) 〔Within〕 (at 20°C)	Saturation current (A)※2		Temperature rise current (A) ※3
					(at 20°C)	(at 105°C)	
01	CDRH50D18RLDNP-1R1NC	A	1.1±30%	17±25%	2.10	1.72	4.40
02	CDRH50D18RLDNP-1R6NC	B	1.6±30%	20±25%	1.75	1.46	3.95
03	CDRH50D18RLDNP-2R2NC	C	2.2±30%	24±25%	1.50	1.24	3.45
04	CDRH50D18RLDNP-3R6NC	D	3.6±30%	31±25%	1.17	0.98	3.15
05	CDRH50D18RLDNP-4R7MC	E	4.7±20%	34±25%	1.00	0.83	2.98
06	CDRH50D18RLDNP-6R8MC	F	6.8±20%	52±25%	0.85	0.70	2.22
07	CDRH50D18RLDNP-100MC	G	10±20%	79±25%	0.72	0.58	1.80
08	CDRH50D18RLDNP-150MC	H	15±20%	120±20%	0.58	0.47	1.40
09	CDRH50D18RLDNP-220MC	J	22±20%	178±20%	0.48	0.40	1.17
10	CDRH50D18RLDNP-330MC	K	33±20%	255±20%	0.38	0.30	0.97
11	CDRH50D18RLDNP-470MC	L	47±20%	355±20%	0.32	0.26	0.77
12	CDRH50D18RLDNP-680MC	M	68±20%	600±20%	0.28	0.23	0.54
13	CDRH50D18RLDNP-101MC	N	100±20%	760±20%	0.22	0.20	0.50
14	CDRH50D18RLDNP-151MC	P	150±20%	1420±20%	0.18	0.15	0.34

※1 Measuring frequency inductance at 100kHz, 1V.

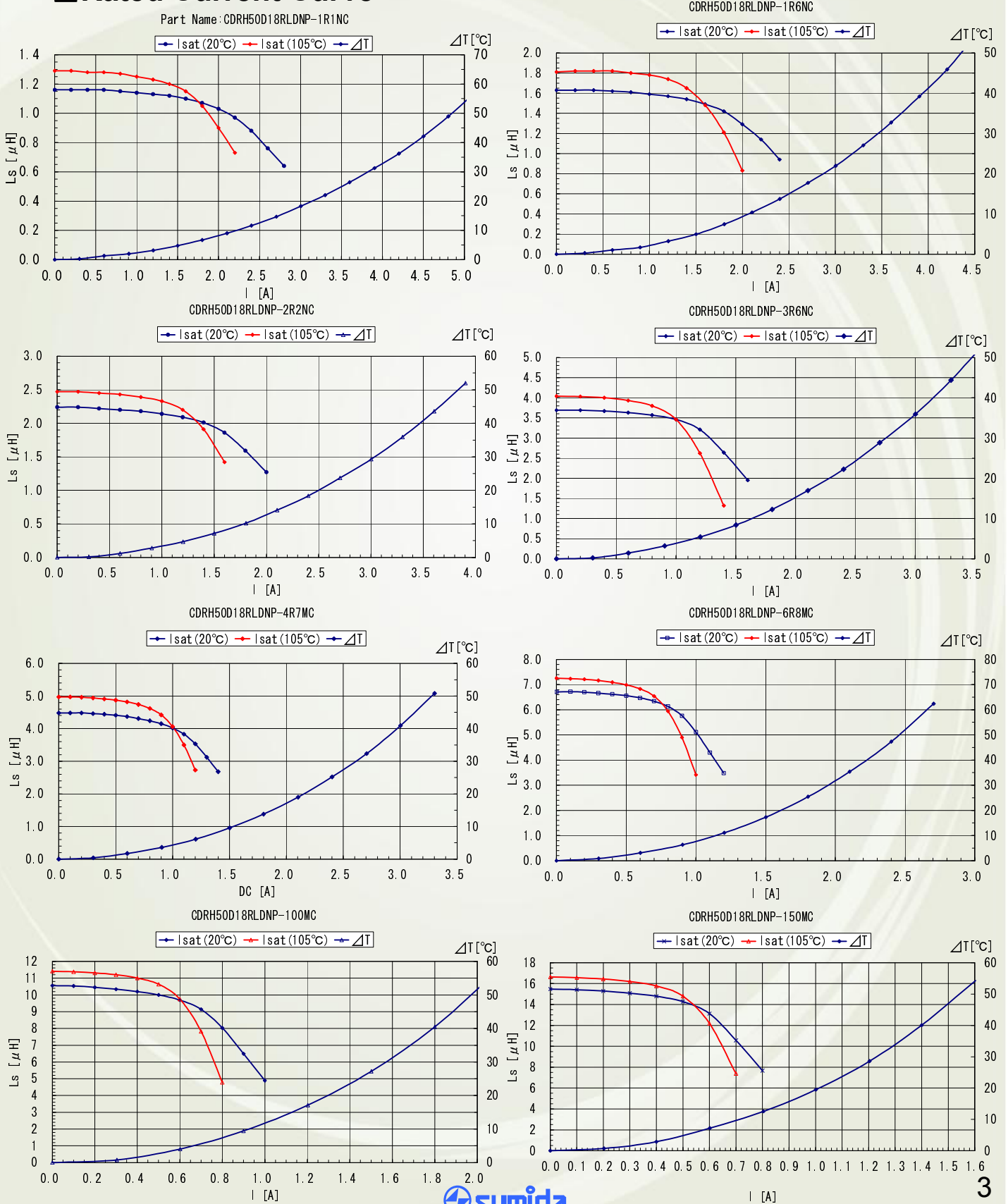
※2 Saturation current: The DC current at which the inductance decreases to 70% of its nominal value.

※3 Temperature rise current: The DC current at which the temperature rise is  $\Delta t=40^{\circ}\text{C}$ . ( $T_a=20^{\circ}\text{C}$ )

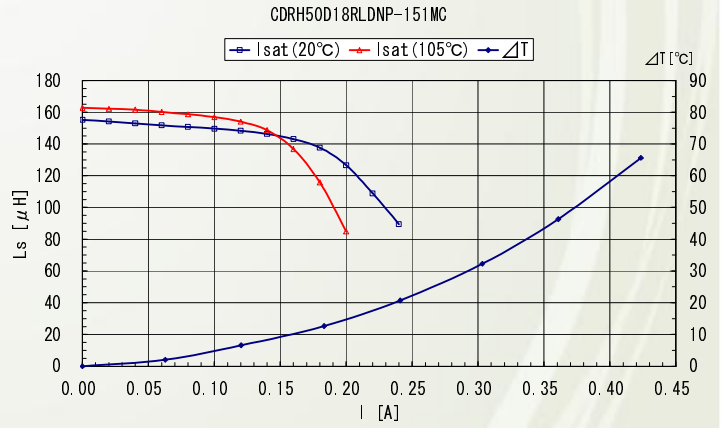
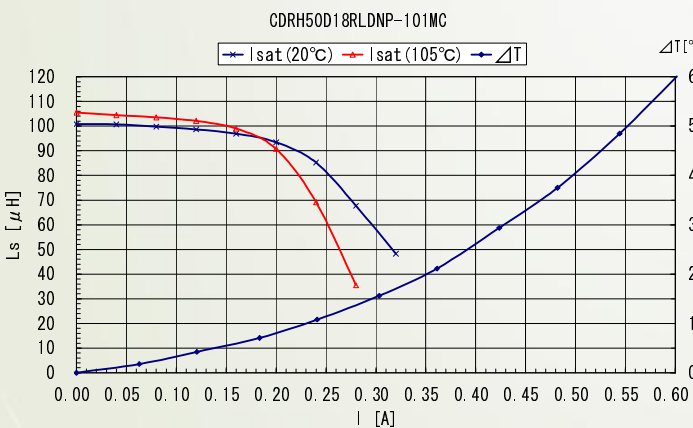
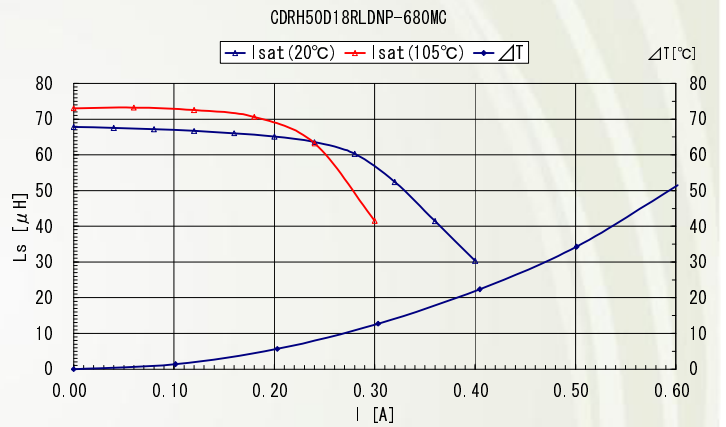
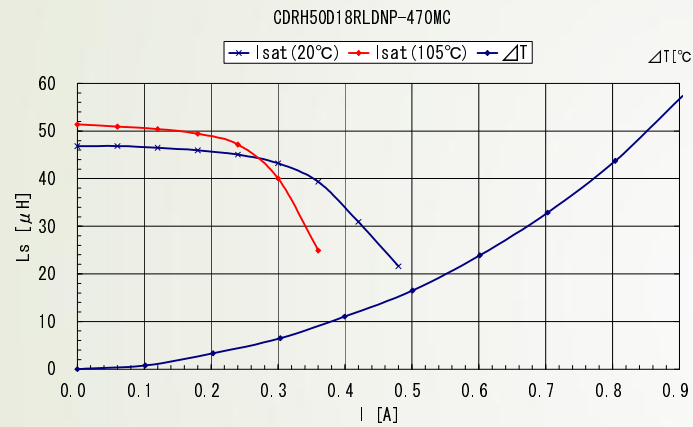
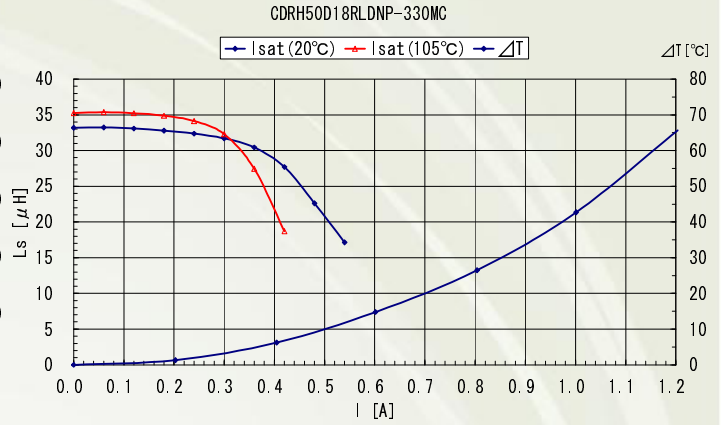
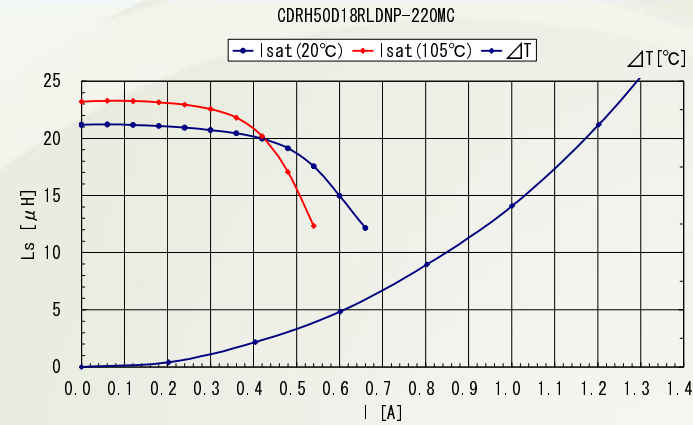
# Power Inductor CDRH50D18R/LD



## Rated Current Curve



# Power Inductor CDRH50D18R/LD



## For More Information

### Hong Kong

Tel.+852-2880-6688  
FAX.+852-2565-9600

### Tokyo

Tel.+81-3-5202-7112  
FAX.+81-3-5202-7105

### Chicago

Tel.+1-847-545-6700  
FAX. +1-847-545-6720

### Shanghai

Tel.+86-021-5836-3299  
FAX.+86-021-5836-3266

### Seoul

Tel.+82-2-6237-0777  
FAX.+82-2-6237-0778

### Obernzell

Tel.+49-8591-937-0  
FAX. +49-8591-937-103

### Shenzhen

Tel.+86-755-8291-0228  
FAX.+86-755-8291-0338

### Singapore

Tel.+65-6296-3388  
FAX.+65-6296-3390

### Neumarkt

Tel.+49-9181-4509-110  
FAX. +49-9181-4509-310

### Taipei

Tel.+886-2-8751-2737  
FAX.+886-2-8751-2738

### San Jose

Tel.+1-408-321-9660  
FAX.+1-408-321-9308